

## JA-R4S-3 Wireless repeater



### Key Features:

- Wireless repeater function
- IPC router function
- Wireless match code to wireless NVR
- Network cable match code to wireless NVR
- Network cable match code wireless IPC with network port
- Wireless match code to pure wireless IPC
- Support T-MODE mode
- NVR wireless connection status light indication
- IPC wireless connection status light indication

### Specification

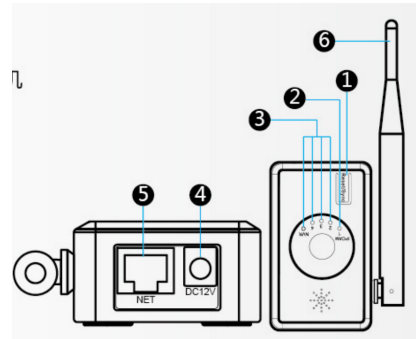
---

Model	JA-R4S -3
WIFI	802.11b/g/n 2.4G
Maximum number of channels	4*wireless IPC
Number of lights	5 LED indicator lights, 4 of which indicate IPCAM connection status light, 1 NVR connection status light
Interface Type	1 x RJ45 100Mbps Network port (Code matching with IPC to transmit video) 1 x pairing button (Trigger on the code matching or reset) 1 x 12V power supply (Power the device)
Size	74x31x186MM

---

## Interface instructions

---



1. Match code/ reset key: trigger code matching status

Press and hold "reset / sync" key for 3 seconds and then release (3 seconds <math>< T < 10</math> seconds), the IPC router enters the state of code matching to the camera, and all IPCAM status lights flash simultaneously

Press and hold "reset / sync" key for 10 seconds and then release (
  2. NVR status light: indicates the wireless connection status of the IPC router and the wireless NVR

Fast blinking: The IPC router is in the state of code-matching wireless NVR.

Steady on: The IPC router is paired and the wireless connection is normal.

Slow blinking: The IPC router is paired, the wireless connection is disconnected, or it is not in the pairing state.

Off: The IPC router is abnormal and needs to be checked.
  3. IPCAM status light: indicates the wireless connection status of the IPC router and the wireless camera

Steady on: A steady light indicates that the camera is connected to the IPC router. Several lights indicate that several cameras are connected, and there are 4 IPCAM status lights in total.

Fast flashing: At the same time, flashing quickly indicates that the IPC router is in the state of code camera. Press and hold "reset / sync" key for 3 seconds and release. The IPC router enters the state of matching code to the camera, and all IPCAM states flash at the same time.
  4. Power supply: power the device
  5. Network port: connect to NVR / switch
  6. Antenna: send and receive wireless signals
-