

## Specifications

Model		DS-MI9605-GA
Video/Audio Input	IP Camera	1 positioning system lite, 4 network cameras (1080p/960p/720p/D1)
	Two-way Audio	1 (2.0Vp-p, 1K $\Omega$ )
Video/Audio Output	Video Output	3: 1 CVBS output (PAL: 720 $\times$ 576, NTSC: 704 $\times$ 576), 1 VGA output (1280 $\times$ 800), 1 HDMI output
	Audio Output	2-ch. Aviation plug (linear, 600 $\Omega$ )
Encoding/Decoding Parameters	Video Compression	H.264, H.265
	Frame Rate	PAL: 1 to 25fps; NTSC: 1 to 30fps
	Audio Compression	G.711, G.722
	Stream Type	Video, video & audio
	Audio Bitrate	16 Kbps
	Dual Stream	Supported
Storage	HDD/SSD	2 $\times$ 2.5 inch HDD/SSD, up to 2 TB for each HDD/SSD
		A dummy HDD with USB 3.0 interface
Wireless Network	3G/4G Dialing	1 $\times$ 3G/4G card slot, 1 $\times$ Rosenberger antenna
	Wi-Fi	1 $\times$ 2.4 G Wi-Fi SMA antenna
Positioning	GNSS (Global Navigation Satellite System)	GPS (Global Positioning System), 1 $\times$ Rosenberger antenna
External Interface	Network Interface	<ul style="list-style-type: none"> <li>● Front panel: 1 <math>\times</math> 10M/100M/1000M RJ45 self-adaptive Ethernet interface</li> <li>● Rear panel: 4 <math>\times</math> 6-pin aviation plug</li> </ul>
	Serial Port	1 $\times$ RS-232
	USB Interface	<ul style="list-style-type: none"> <li>● Front panel: 2 <math>\times</math> Type-A USB 3.0</li> <li>● Rear panel: 1 <math>\times</math> USB 2.0 of 5-pin aviation plug</li> </ul>
	Alarm Input	8
	Alarm Output	2
	eSATA Interface	1 (reserved)
General	Operating Method	Mouse, IR remote control, Web control
	Power Supply	9 to 32 VDC
	Consumption	<ul style="list-style-type: none"> <li>● Standby: <math>\leq</math> 0.5 W</li> <li>● Full load: <math>\leq</math> 80 W</li> </ul>
	Working Temperature	<ul style="list-style-type: none"> <li>● Device that provides dummy HDD with heating function: -30 <math>^{\circ}</math>C to +60 <math>^{\circ}</math>C (-22 <math>^{\circ}</math>F to +140<math>^{\circ}</math>F)</li> <li>● Other devices: -10 <math>^{\circ}</math>C to +60 <math>^{\circ}</math>C (14 <math>^{\circ}</math>F to 140<math>^{\circ}</math>F)</li> </ul>
	Working Humidity	10% to 90%
	Dimensions (W $\times$ D $\times$ H)	202 $\times$ 252 $\times$ 87 mm (8.0 $\times$ 9.9 $\times$ 3.4 inch)
	Weight (Without Storage Media)	$\leq$ 4.5 Kg (9.9 lb)

## Specifications

Model	iDS-TCC215-I/30/T(B)
Parameters	Network HD IR Positioning System Lite
<b>Camera Module</b>	
Image sensor	1/2.8" Progressive Scan CMOS
Resolution	50 Hz:25fps (1920 x 1080/1280 x 720/1280 x 960) 60 Hz:30fps (1920 x 1080/1280 x 720/1280 x 960)
Min. illuminate	Color:0.05Lux @ (F1.6, AGC ON)
S/N ratio	> 52dB
Focal length	4.5-135mm, 30× optical
Aperture range	F1.6-F4.4
Horizontal field of view	65.1-2.34° (wide-tele)
Working Distance	10mm to 1500mm (wide-tele)
Zoom speed	Approx. 3 s (optical lens, wide-tele)
Day & night	ICR
Focus mode	Auto/Semi-automatic/Manual
Exposure mode	Auto/Iris Priority/Shutter priority/Manual
Day/night mode	Auto/Color/B/W
Digital shutter	1/1 s to 1/30,000 s
White balance	Auto 1/Auto 2/Manual/Indoor/Outdoor/Fluorescent Lamp/Sodium Lamp
DNR	3D DNR
WDR	On/off
Image adjusting	Brightness, contrast, sharpness, hue
BLC	On/off
Digital zoom	12
Mirror image	Supported
Video compression	H.264 main Profile/H.265
Bitrate	32kbps-12Mbps
Network protocol	TCP/IP, HTTP, DHCP, DNS, DDNS, RTP, RTSP, PPPoE, SMTP, NTP, UPnP, SNMP, FTP, 802.1x, QoS, HTTPS, IPv6 (SIP, SRTP optional), GB28181, EHOME
Network camera protocol	ONVIF, PSIA, CGI, ISAPI
Dual stream	Supported
Security strategy	Password protection, multi-user access control
<b>Pan and Title</b>	
Preset speed (pan)	100°/s
Preset speed (tilt)	80°/s
Pan speed	0° to 60°/s
Tilt speed	0° to 40°/s
Movement Range (pan)	360° endless
Movement Range (tilt)	-90° to +90°
Pattern	6
Preset	256
RS-485	PELCO_D
<b>General</b>	
Communication interface	RJ45 network interface. Supporting remote upgrade
Power supply	12 VDC ± 10%
Working temperature	-35 °C to +55 °C (-31 °F to 131 °F)
Working humidity	≤ 90%
Ingress Protection	IP66
Consumption	< 50W
Shock resistance	≥ 4G
Weight	6 Kg (13.2 lb)



## DS-MP1308 7-inch HD LCD

### Features and Functions

- 7-inch LCD. LED backlight.
- High definition.
- Touchscreen.
- Display enforcement system image and GUI.
- Aviation plug design.
- TFT material.



### Typical Application

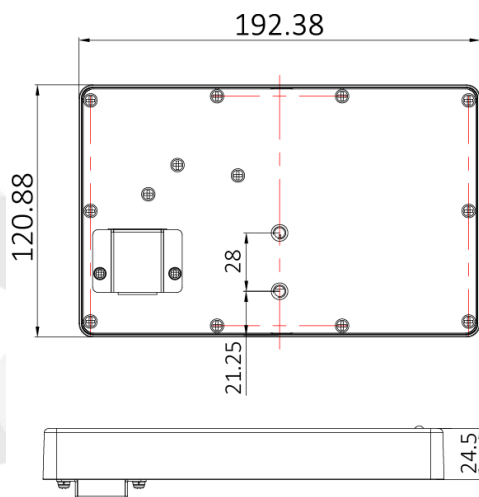
Mobile environment

### Available Model

DS-MP1308

### Dimensions

Unit: mm



### Specifications

Model	DS-MP1308 7-inch HD LCD
Resolution	1024 × 600
Material	TFT
Backlight mode	LED backlight
Dimensions	7-inch
Consumption	≤ 5W
Weight	≤ 0.6 Kg (1.3 lb)
Working voltage	12 V
Working temperature	-20 °C to +60 °C (-4 °F to +140 °F)
Working humidity	10% to 95%
Touchscreen	Supported. Multi-touch

